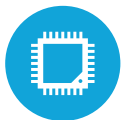




### HIGHLIGHTS



2 CPU Options Available (up to i3)



Multiple Ports and Optional Peripherals



Foldable Stand for Ergonomic Small Footprint



14" Widescreen HD LED LCD



Fanless and Ventless Design

# SPECIFICATIONS

## MOTHERBOARD

Processors:

Intel® Celeron® Quad Core Processor J1900 2.0 (Black and White)

i3-6100U 2.3GHz Skylake (Black only)

Ghz Chipset: Intel® NM70 Chipset

System Memory: 1xDDR3L SoDimmup to 8GB, 1333Mhz

Cache: 2MB

## DISPLAY

LCD Size: 14" Widescreen LCD

Resolution: 1366 x 768 LCD

Brightness: 230 cd/m2

LCD Backlight Type: LED

LCD Aspect Ratio: 16:9

Touch Glass: Projected Capacitive

## STORAGE

Solid State Drive: Standard 64 GB

SSD Optional 128 GB SSD

## EXTERNAL I/O PORTS

Serial Port: 3 RJ45-RS232 ports (power option via jumper)

USB Port: 5x USB 2.0, 1x USB 3.0-J1900

USB Port: 2x USB 2.0, 4x USB 3.0- i3

Cash Drawer Port: 1

DC Jack: Lock-in 4PIN, 19V

Gigabit LAN Port: 1

VGA Port: 1

PS/2: 1- J1900 (Optional) (N/A on i3)

Audio Out: 1 (Optional)

## EXPANSION

MiniPCI-e Slot: 1 (for wireless LAN)

## OPTIONAL PERIPHERALS

MSR: Integrated USB MSR (encrypted option available)

Barcode Scanner: Integrated 2D Barcode Scanner (programmable)

Customer Display: Integrated Customer Display 2x20 (LCM), 8.4", 14", and 15" LCD

Printer Base: Compatible with T25 or T70II Printer base options

Digital Persona: 1

Wireless LAN: Wireless a/b/g/n

## TECHNICAL SPECS

Dimensions: 385x180x280mm (15" x 7" x 11") with base unfolded

Weight: 3.94kg (8.7lbs) with PSU

Mounting Option: 75mm x 75mm VESA

OS Supported: Windows 7, POS Ready 7, Windows 8.1

Embedded Industry Retail Pro, Win 10 IOT & Pro

64-bit Support: Yes



KEY:	
1	14.1 Widescreen LED Projected Capacitive Display
2	Optional Rear Customer Display (sizes available)
3	Optional Printer Base
4	Optional Integrated Fingerprint Reader
5	External I/O Ports (15 total)
6	Optional MSR