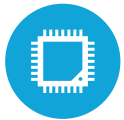




HIGHLIGHTS



21.5" Widescreen All-In-One



Intel i3-6100U CPU



All In One that converts to Panel PC



Supports both Landscape and Portrait Screen Orientations



Fanless Design

SPECIFICATIONS

PROCESSING

Intel® Core® i3-6100U 2.3Ghz Skylake

Intel® HD Graphics 520

LCD PANEL

LCD Size: 21.5" LED LCD

Display: 16:9 Widescreen

Brightness: 250cd/m²

Max Resolution: 1920 x 1080

Touch Screen Type: Projected Capacitive

Screen: Bezel-less True Flat

STORAGE

Solid State Drive: 128 GB

(HDD options available)

RAM: 4 GB Standard, up to 16 GB

POWER ADAPTER

12-30V/7A (84W ITE Adapter)

DIMENSIONS

19.8" H x 12.4" W x 1.8" D (without base)

Weight: 12.7 LBS

EXPANSION

Mini-PCI Express Slot: 1

mSata Slot: 1

I/O PORTS (STANDARD)

USB: 2 x(USB 2.0) 4 x(USB 3.0)

Serial: 2 xDB9

HDMI: x1

Audio in: x1

Audio out: x1

LAN: x 2

CD: x1

OPTIONAL PERIPHERALS

MSR USB: Encrypted Option Available

Wireless LAN: 802.11 b/g/n/ac

Scanner: 2D Barcode Scanner

Fingerprint Reader

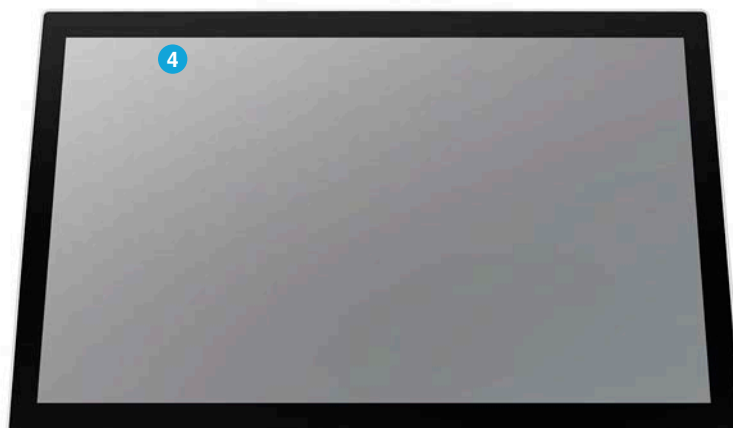
Camera/WebCam

VESA/ Wallmountable

ENVIRONMENT

Operating & Storage Temperature: 0°C ~ 35°C (32°F ~ +95°F), -20°C ~ 60°C (-4°F ~ 140°F)

Operating & Storage Humidity: 20% ~ 85% RH non-condensing



KEY FEATURES

1	22" Projected Capacitive Touch Screen
2	Fanless All In One
3	Multiple Base options, Ideal Kiosk Solution
4	All in One converts to a Panel PC

OS SUPPORT

POS Ready 7, Windows 8.1 Industry Retail Pro, Windows 10 IOT
Windows 10 Pro, Linux (*All options are 64 Bit Only)