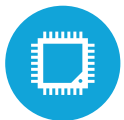




HIGHLIGHTS



Rackable Motherboard



Up to i7 Haswell CPU



Projected Capacitive Touch Screen



Solid State Hard Drive In Raid (optional)



Integrated Options (MSR, fingerprint & barcode scanner)

SPECIFICATIONS

MOTHERBOARD

CPU: Intel® i7-4770S 3.1GHz (up to 3.9GHz),
 Intel® i5-4570S 2.9GHz (up to 3.6GHz),
 Intel® i3-4330 3.5GHz, Intel® Celeron® G1820 2.7GHz
 Chipset: Intel Lynx Point PCH Q87 (AMT, RADIO 0, 1, hot swap)
 System Memory: 2x DIMM up to 16GB DD3, Dual Channel, 1333/1600Mhz
 Graphics Memory: Intel HD Graphics DirectX 11.1, HD4600 (G1820-HD Graphics)
 LAN Controller: Intel 1218LM (phy), 2nd Intel i210AT
 Audio Controller: Realtek ALC662VDO-GR
 TPM Support: Yes

LCD DISPLAY

LCD Size: 15.1", 300nits, 1024 x 768 max resolution / 17", 350nits, 1280 x 1024
 Backlight Technology: LED
 Aspect Ratio: 4:3
 Touch Screen Type: 15" & 17" Projected Capacitive Touch

STORAGE

Solid State Drive: 128GB SSD (With Raid, Optional)
 Optional 256GB SSD

EXPANSION

Mini-PCI Express Slot: 1 (for wireless card expansion)

REAR I/O PORTS

USB: 4 x USB 2.0, 2 x USB 3.0
 Cash Drawer Port: 1 (optional)
 2nd VGA: 1
 LAN 10/100/1000: 2
 Serial/COM: 4 x 3RJ45, (COM1 & COM2, COM3 OV/SV/12V, power enabled by BIOS, 1 x D89 with power state LED indicators)
 Line Out: 1
 MIC In: 1
 PS2: 1
 Printer/Parallel Port: 1
 DVI: 1 (optional)
 Power Button: 1

OPTIONAL PERIPHERALS

Magnetic Stripe Reader: 3in1 MSR with encryption options available
 Customer Display: 2 x 20 VFD (COM)
 2nd Display: 8.4" / 15" 2nd Display, optional touch
 Speaker: 2 x 2W speaker (2x3W speaker for 17")
 Wireless: Mini PCI-E WLAN card, Intel, 1x1 IEEE 802.11 a/b/g/n/ac
 Barcode Reader: Integrated 2D Barcode Reader

CERTIFICATION

EMC & Safety: FCC/Class A, CE, LVD
 Dust & Water Proof: Front Bezel



KEY FEATURES	
1	Rackable Motherboard
2	15" Projected Capacitive Touch Screen
3	Slim MSR (multiple options available)
4	Universal Printer Base (several base options available)
5	Sleek Design

POWER

Power Adapter: +19V/180Watts

ENVIRONMENT

Operating Temperature: 0°C ~ 35°C (32°F ~ 95°F)
 Storage Temperature: -20°C ~ 60°C (-4°F ~ 140°F)
 Operating Humidity: 20% ~ 80% RH non-condensing
 Storage Humidity: 20% ~ 85% RH non-condensing

OS SUPPORTED

Windows 7 Pro, POS Ready 7, Windows 8.1 Embedded Industry
 Retail Pro, Windows 10 IOT Pro, Windows 10 IOT Enterprise, Linux