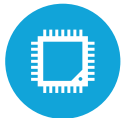




HIGHLIGHTS



Projected Capacitive Touch Screen



3 CPU Options Available



Up to 16GB RAM



Rackable Motherboard



Multiple Peripheral Options

SPECIFICATIONS

PROCESSING

Intel® Celeron® 3955U Dualcore 2.0Ghz
i3- i3-6100U 2.3Ghz Skylake
i5-6100U 2.4 Ghz Skylake

Memory: So-DIMM x2 up to 16GB DDR3L
Intel HD Graphics: Intel® HD Graphics 510 (3955u)
Intel® HD Graphics 520 (i3 & i5)

LCD PANEL

LCD Size: 15"
LCD Type: LED LCD
Brightness: 300cd/m²
Aspect Ratio:4:3
Touch Screen Type: Projected Capacitive
Screen: Bezel-less True Flat

STORAGE

Solid State Drive: Standard 64GB SSD
Optional 128GB SSD

POWER ADAPTER

Integrated 90W 19V 3.4A DIN Connector

DIMENSIONS

15" with base; 19 1/2" H x 17 1/2" W x 9 1/2" D (with MSR)
Weight on Standard base: 7.5 LBS

7j bS` e[a`

? [[B5; 7] bdMe E`af, #

I/O PORTS (STANDARD)

USB: 2 x(USB 2.#) 4 x(USB 3.0)
Serial: &xRJ45 (COM \$! 3, 4 powered abf[a` t 5V/t 12V)
Powered USB: Optional 1x +12V and 1x +24V
Cash Drawer Port: 1x(+12V/+24V)
2nd VGA: 1 x D-sub15 (Power option available)
3rd VGA: 1x Display Port

OPTIONAL PERIPHERALS

MSR USB: Encrypted Option Available
Fingerprint Reader: Digital Persona (USB Interface)
Rear LCD: 8.4" x 15" (Touch Optional)
Customer Display: 2 x 20 VFD Display
Wireless LAN: 802.11 b/g/n/ac
Scanner: 2D Barcode Scanner
Speakers: 2x2W Speakers
Pin Pad Mount

OS SUPPORT

POS Ready 7, Windows 8.1 Industry Retail Pro, Windows 10IOT
Windows 10 Pro, Linux (*All options are 64 Bit Only)



KEY FEATURES

1	15" Projected Capacitive Touch Screen
2	USB MSR and other optional peripherals available
3	Multitple Base options
4	Rackable Motherboard